

# CHERRY HOME NEWS

Summer 2011



Cherry Home Association, PO Box 745, Northport, MI 49670  
www.cherryhomeshores.com

## Annual Meeting

We had about 45-50 members at the annual meeting held May 28<sup>th</sup> and that was followed by a picnic at 5 PM that day. Our finances appear to be in good shape with the escrow accounts for a new roof and refinishing of the tennis courts coming along as planned. A 5-year plan was reviewed and from the list a project to open the clubhouse bathrooms instead of the Porta-John got enthusiastic support. We will look hard at that and as most people know the devil lives in the details, but it appears we can do that with enough entrance security to avoid vandalism.

New Members introduced themselves. They were:  
Jerry and Mary Gerbig - 13241 Knollwood

John & Mary Maynard - 14556 Forest Beach Shores  
Bob & Linda Bayer - 13344 Knollwood  
Steve & Linda Thoburn - 14237 Forest Beach Shores  
Please make a special effort to welcome and assist our new members.

## PJ or No

The issue of a Porta-John at South Park has resurfaced with both advocates and foes of the measure expressing themselves. To get at the details and gather facts a **Study Group** is being formed with George Carpenter acting as a coordinator, but not a member. Advocates, foes and neutral viewed persons will comprise the Study Group and hopefully can report back to the board before the end of the summer.  
Pro: Kathryn Murphy, Bruce Ellenwood, Sandy Zwemer

## INSIDE THIS ISSUE

Annual Meeting	1
Porta-John	1
Board Elections	2
Park Vandalism	2
Invasive Species	2
Social Programs	2
Trails	3
Rubbish Pickup	3

Con: Ernie Barry, Ivars Zadvinskis, Ken Serwin  
Neutral - Kent VanEmst, Helen Shiley

## Board Elections

All three candidates for the three board positions were elected. They were George Carpenter, Lynn Livingston and David Schmidtke. They will serve three year terms. Officers elected by the board for 2011-2102 are:

President - David Schmidtke  
Vice President and Secretary - Bob VanderMark  
Treasurer - Chuck Whetsel.

### **Unauthorized Park Cutting**

Someone did an unauthorized cutting of small trees and brush near the water in Central Park. That is not something that should be occurring. We recognize we need to do a better job of determining how to use our parks. To that end we will look to create a **Parks Management Plans** this summer. If you want to get your opinion into this please contact any member of the board. George Carpenter will probably be central to this activity. We have 5 parks, North, Central, Clubhouse, South and one off the water across from North Park. Take a look at these sometime and offer your thoughts. We will be asking for folks to help with debris removal in Central Park.

**Invasive Species** work continues by the county and Lynn Livingston will be scheduling a knapweed removal work session sometime this summer. In addition, The Conservancy will be doing a survey of exotic as well as

threatened, rare and endangered species along the shore and in the woods, State Park and Cathead Bay. Good progress was reported by Leelanau Conservation District in the control of Phragmites. Known infestations were chemically treated and some burned.

Treatment will again take place in late summer or early fall this year.

Autumn Olive is also becoming a problem and George Carpenter said he would identify a few plants along the roadside so folks see what it is and residents can ask for a roadside review of their property to identify plants they may want to pull.

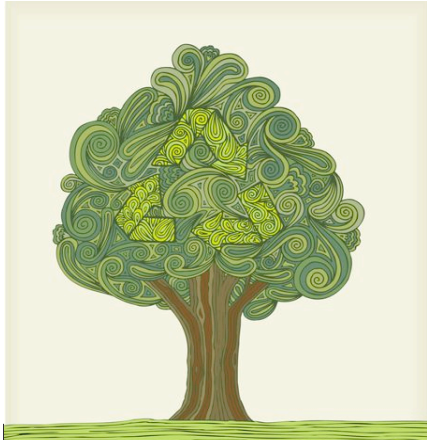
### **CHA 2011-2012**

**Directories** were distributed at the annual meeting. We have some available if you need one. See Dave Schmidtke about that or there are a few in the Clubhouse.

**Rubbish Pickup - call Kalchik (271-3367)** if you have an unusual amount of trash for pick up or large items like an appliance. Otherwise it may well not get collected. Some residents have been having a problem with this.

### **Social Program**

We had about 50 people at the Annual Meeting Picnic that evening with burgers, brats and hot dogs provided. It was an enjoyable evening with the weather cooperating. Ladies luncheons have been scheduled for the summer and notices will be on the kiosk. The number of activities is really limited by the interest of the membership in organizing and participation. Lynn Livingston has expressed interest in hosting a movie showing occasionally during the summer. He did one Memorial Day weekend, but with little publicity and few turned out. If this is something you would enjoy, please contact Lynn.



Don and Peg Ramsdell put up tree identification tags along the trails so that about 11 different kinds of trees have been named. This continues and extends previous efforts to identify the major species for people using the trails.

### Trails

A group will be working on bridging some wet spots on the Red Trail and looking to see if we can establish another trail at the North end of the CHA property. If you would like to help contact John Rademacher.

### Web Site Update

We have added a new page to our web site called "Nature channel." It will be updated periodically by George Carpenter and others with news of what's happening in the natural world around Cherryhome Shores. Check it out and send an email if you want to add some information of your own! Everyone is asked to contribute and we welcome your feedback!



Trillium



Wild Phlox

**Board Members and Volunteers -**

President - David Schmidtke

Vice President - Bob Vandermark

Treasurer - Chuck Whetsel

Secretary - Bob Vandermark

Members - Dan Rasey - Architectural Committee

Don Walworth

George Carpenter - invasive plants

Lynn Livingston - Web Site

John Rademacher

Bob Zwemer

Trails Coordinator - John Rademacher

Clubhouse Coordinator - Al Noftz

Social Chairman - Linda VanEmst

Be sure to check our web site for new, calendars of events and the photo gallery of people and places around Cherry Home Shores. You can also leave a comment or suggestion for the board.

---

*We're on the Web!*

*Visit us at:*

[www.cherryhomeshores.com](http://www.cherryhomeshores.com)

---

Cherry Home Association

P O Box 745

Northport, MI 49670



**Mailing label**