

# CHERRY HOME NEWS

Summer 2009



Cherry Home Association, PO Box 745, Northport, MI 49670  
www.cherryhomeshores.com

## Annual Meeting & Election of Board Members

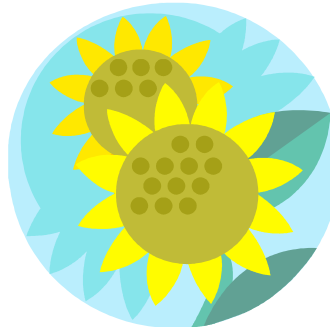
The annual meeting of Cherry Home Association was called to order by Bob VanderMark, president, on May 23<sup>rd</sup>.

**Election Results:** Patty Barnett shared that new members elected to the CHA board were Don Walworth and Chuck Whetsel. Bob Zwemer was also elected through a write-in ballot and he accepted the position.

**Munson Hospital:** Ruth Bloomer made the membership aware of services available at Munson Hospital, which has been recognized at the national level for quality of care. Pauline Nielson went over what services were specifically available in Northport and Suttons Bay.

**Township Report:** Township Supervisor Jim Neve reported on projects completed in the last year, including the sewer project, replacing the toilets at the airport, and thinning out trees at

Peterson Park to open up the view. He also reported that all millage requests in the last year passed by large margins. They are looking to upgrade the library exterior with a sun porch in the works and some new landscaping. Finances for the township remain solid and tax bills are holding steady.



**Sheriff's Report:** Officer Bob Bailey has replaced Ross Arena as our Township sheriff's officer. Ross, CHA resident, has been promoted and is still in the Sheriff's office. You will still see a sheriff's car at his home. Matt Green and Bob Bailey gave the sheriff's report. They see few problems in CHS and reminded residents to report any problems to dispatch at 256-8800. Don Ramsdell asked about enforcement of the junk ordinance and Bob reported they enforce complaints, but don't overtly look for infractions.

## INSIDE THIS ISSUE

Annual Meeting	1
Township Report	1
State of Our Association	2
Hazardous Waste	2
Activities	2
June Board Meeting	3
Phragmites	3
Kiosk & Clubhouse Rental	3

## Clubhouse Improvements:

Al Noftz shared what improvements had been made over the last year, including interior painting of the clubhouse and new lights. The swing sets were also upgraded to make them safer, and baby seats have been added.

**New CHA members.** We don't have a great system for identifying new members so if we miss you we apologize.

Bayholdings, Inc. -  
Lot B 176  
Kyle Cooper -  
Lot A 95  
John & Kristen Hood -  
Lot B 251  
Philip & Julie King -  
14674 FBS  
James Sager -  
13143 Knollwood  
Andrew Williamson  
Lot C 012

## STATE OF OUR ASSOCIATION

Cherry Home Association was established June 15<sup>th</sup>, 1968. It is a Michigan certified Non-Profit Corporation. Our fiscal year runs May 1<sup>st</sup> through April 31<sup>st</sup>. Association members pay dues of \$45.00 per year per lot. Over 90% of dues are used to repair, maintain and/or renovate our common assets, including trails, parks, the clubhouse, tennis courts, and clubhouse grounds. Last year we collected about \$24,000 in dues. Approximately \$15,000 of that was spent on clubhouse and grounds maintenance, repairs, and renovations. The remainder went to our operating fund, maintenance escrow accounts for the tennis courts, clubhouse roof replacement, and contingency funds. These escrow and contingency funds are invested in Certificates of Deposits at Credit Union One in Traverse City. The value of these cash assets at the end of last fiscal year were about \$28,000. In addition we have a cash operating fund for 2009/10 of about \$24,000 with a balanced budget in place for that same period. We do not have a current real estate value for CHA common property. This property cannot be developed or sold, nor do we pay property tax, therefore we do not carry it on our books with an asset value.

*Chuck Whetsel, Treasurer*

**Hazardous Waste Collection** - Sutton's Bay July 25<sup>th</sup> Government Center Suttons Bay Township and a third on Oct 3 in Peshawbestown. Reservations are necessary - County Planning and Community Development Department 231-256-9812. A list of acceptable materials is available on line at [www.leelanau.cc/solidwaste.asp](http://www.leelanau.cc/solidwaste.asp). This is a good chance to properly dispose of things like old oil based paint, and pesticides.

**Maintenance Work in Cherry Home** - Cherry

Home Association, on occasion, has maintenance, mowing, and clean-up work that we pay at an hourly rate of \$12.00 hour. If you would like to be included in our list of interested workers, please contact one of the board members.

**Folks that passed away** - Marge Glasel passed away March 16, 2009. She was a lovely lady who was a long time Cherry Home Shores resident and quite involved in CHA and Northport activities. Her husband, Ray, has been a

past president of CHA. A memorial was held May 15, 2009.

**Card Night** - is currently Wednesday evenings beginning at 7:30 PM. At one time we had bridge lessons given by a member so this activity is not limited to that time period. Drop in some time. Current interest is Euchre and poker. Do we have enough interest in pinochle, sheepshead, scrabble, bridge or ma jong to get groups going?

**Morning Coffee** - has started once a week on Tuesdays at 9:00 AM in the clubhouse.

**911 Calls on Cell Phones** - this topic came up at the annual meeting in discussions with sheriff's department officers. If you place a 911 call on your cell phone in Cherry Home Shores more than likely the call will be taken by a 911 call center in Crawford, Cheboygan, Emmett County (CCE) Once they learn you are calling from Leelanau County they will attempt to transfer you to the Leelanau 911 dispatcher, however that transfer does not always work as hoped. You can phone the Leelanau County Sheriff's office directly (231-256-8800). The same person(s) answer this phone as handle the

911 calls. Just say you have an emergency and they will just use a different keyboard. A good idea would be to enter the Leelanau Sheriff's Office number in your list of speed dials on your cell phone or certainly in the general list there.

**June 20, 2009 Board Meeting** - The board approved purchase and installation of a flat screen HD TV and DVD player for the clubhouse. Neil Barnett will be handling the details and installation. Also approved was repainting of the clubhouse exterior. It really needs it. Al Noftz will handle the contracting and Mary Barrett will finalize the color. With the help of Bob Olson, a CHA resident and an architect by profession, we are moving ahead with plans to install acoustical treatments to improve the sound in the clubhouse. Al Noftz is heading this project with Bob's assistance and advice.

**Our Kiosk** has been getting plenty of use with the coming of summer. During the summer we will be adding a non-door section in which non-CHA printed announcements may be pinned. These

will be for a limited time and subject to some weather. Mary Barrett will be creating guidelines for use of the Kiosk.

**Please do not drive on Clubhouse Lawn** - We have sprinkler heads in various places and they are easily broken by driving over them. There is no need for members or guests to drive on the lawn or walkway.

**Revised Clubhouse Rental Policy** - For the complete policy please visit the web site. In brief, we have altered the fee for non-CHA use. We now have a \$50 non-refundable fee and a \$50 deposit, which will be returned if the clubhouse is left in a clean manner. The previous fee was \$100.

**Phragmites Control** - This terribly invasive plant has been getting much attention in Leelanau County this year. Our county is seeking a county wide permit for controlling phragmites, which will allow homeowners and businesses to kill the plant or contract to have it done. In CHA we have three people that are knowledgeable; Bob Vandermark, Linda Van

Emst and Lynn Livingston. Lynn will coordinate CHA activities for this project. If you have an interest in helping CHA or doing your own shoreline you may want to contact Lynn.

**Five Year Plan** - We have begun work on a revised Five Year Plan with Bob Vandermark heading up the effort. When we complete this work it will be shared with the members. In the meantime you may have ideas and please share them with Bob or other board members.

**Rubbish Pickup** - call **Kalchik (271-3367)** if you have an unusual amount of trash for pickup. Otherwise it may well not get collected. Some residents have been having a problem with this.

**Celiac?** Do you need to be gluten free? Help and advice is available in the area from the Traverse City Area Celiac group. They have a web site at <http://www.traversearea.glutenfree.com/>. If you have further questions, contact Dave. [dnport@torchlake.com](mailto:dnport@torchlake.com)

**Board Members and Volunteers -**

President - David Schmidtke

Vice President - Bob Vandermark

Treasurer - Chuck Whetsel

Secretary - Bob Vandermark

Members - Rick Tatro - Architectural Committee

Don Walworth

Mary Barrett - Kiosk

Lynn Livingston - Web Site and

Phragmites Control

Karen Casebeer

Bob Zwemer

Trails Coordinator - George Carpenter

Clubhouse Coordinator - Al Noftz

Social Chairman - Linda VanEmst

Be sure to check our web site for new, calendars of events and the photo gallery of people and places around Cherry Home Shores. You can also leave a comment or suggestion for the board.

---

*We're on the Web!*

*Visit us at:*

[www.cherryhomeshores.com](http://www.cherryhomeshores.com)

---

Cherry Home Association

P O Box 745

Northport, MI 49670



**Mailing label**